

SPECIFICATION

QX3202VD

(3.2cc 24V)

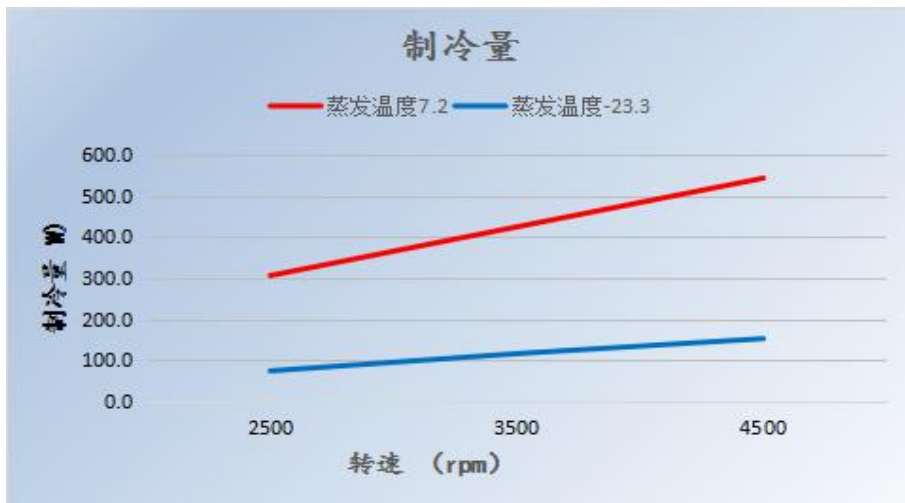


Specification

Compressor	Type Displacement (cc/rev) Application	Hermetic & Rotary 3.25 LBP & HBP
Motor	Type Rated Voltage (V) Voltage Range (V) Rated Speed (rpm) Rated Current (A) Max Current (A) Winding(20℃) Ω	DC Brushless DC 24 DC 20 ~ 32 2000 ~ 4500 2.1 ~ 8 12 0.7
Refrigerant	Type	R134a
Oil	Type & Amount (ml)	RL-32H, RB68EP & 55
Compression Ratio	≤8	
Compressor weight (include oil) Kg		0.69
Compressor Capacity	Speed Range (rpm)	2000 ~ 4500
	Cooling Capacity(W)	70 ~ 550
Evaporating Temp (℃)		-23.3 ~ 7.2
Condensing Temp (℃)		27 ~ 65
Max Compressor Temp (℃)		120
Ambient Temp (℃)		5 ~ 43
Noise dB		≤40
Controller	Driver Board	DB3010-1

Performance Curve

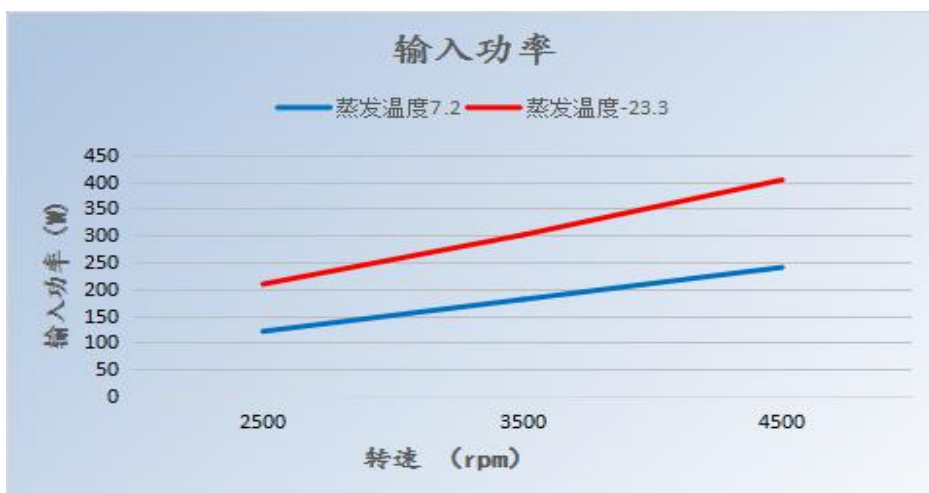
1. Cooling Capacity



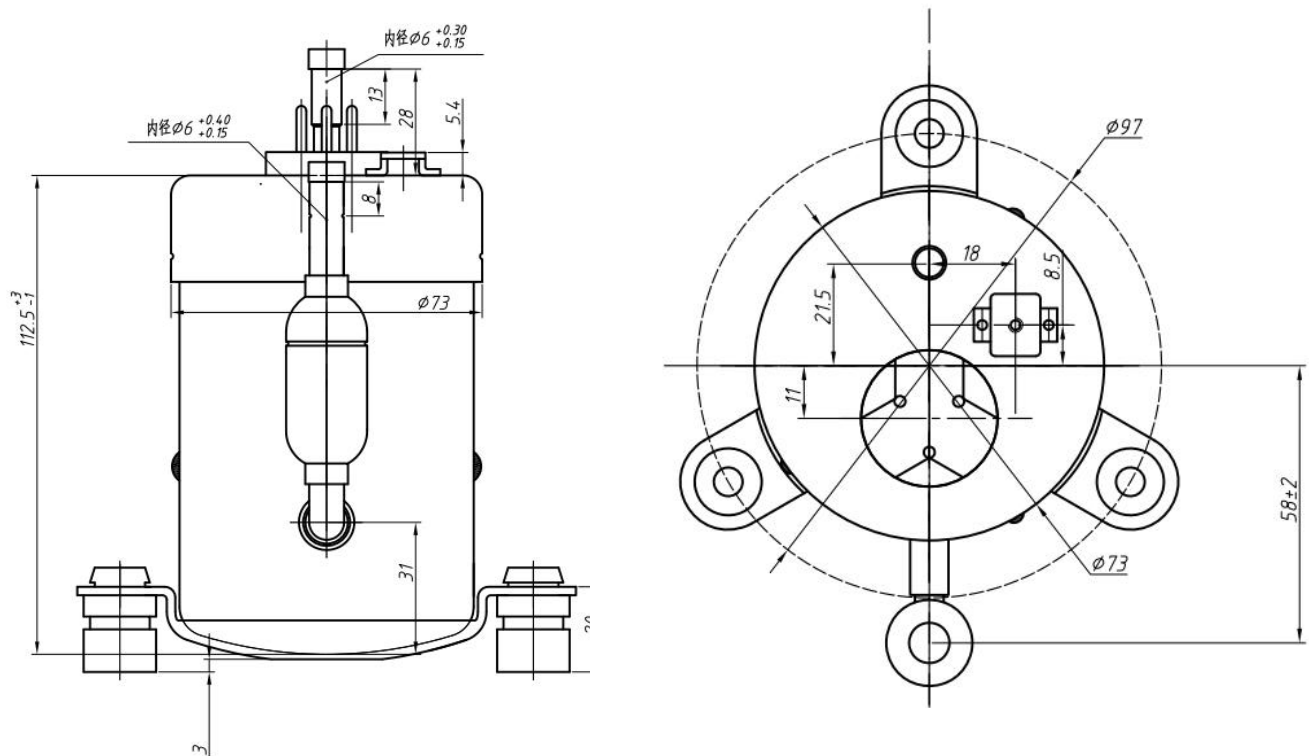
2. Coefficient of Performance



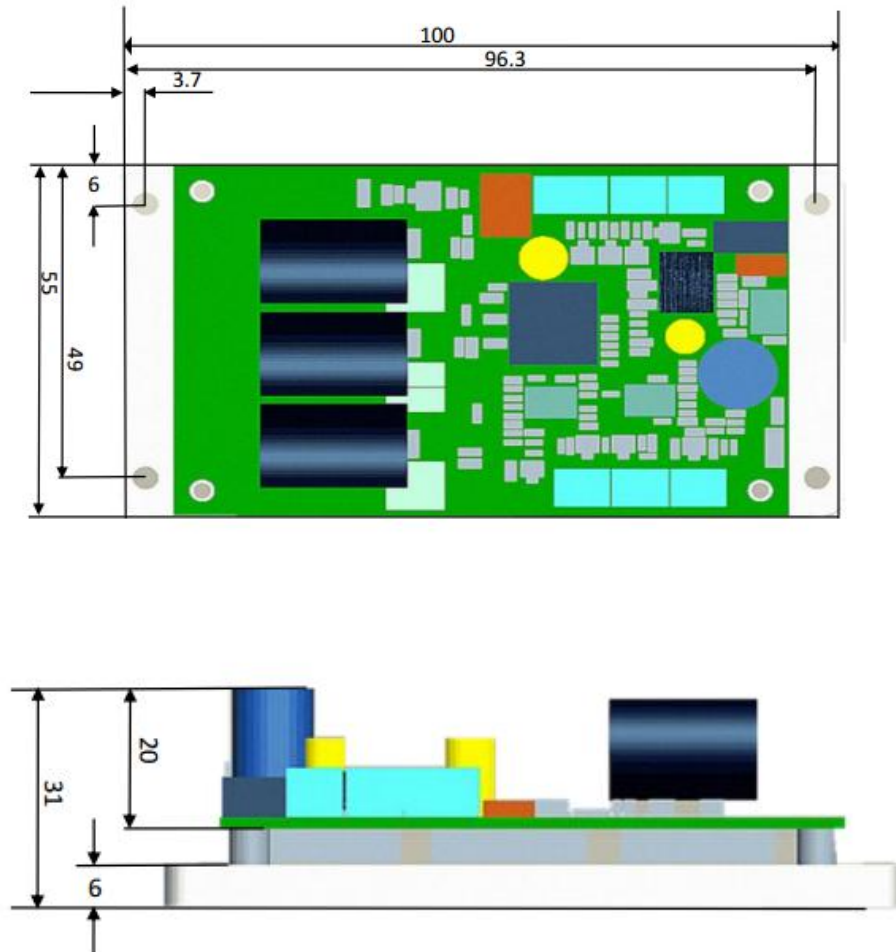
1. Input Power



External Drawing:



The Diver Board Dimension:



Other Parameters:

Item		Data
Output	Rated Voltage(V)	24
	Rated Current(A)	8
	Rated Cooling Capacity(W)	300
	Capacity Input(W)	300
	Capacity Output(Hz)	500
	Rated Compressor Speed(rpm)	4500
Input	Motor	Direct Current
	Voltage Range(V)	20 -32
	Rated Frequency(Hz)	-
	Frequency Factor	-
Operation	Acceleration time(from 0 Hz to Max Hz)	30s
	Speed Accuracy	1%
	Speed Range(rpm)	2000-4500
	Overload Protection	Yes
Others	The Type of Cooling	Natural
	Noise	≤ 40dB
	Vibration	Ultra Low